

Wherigos

Wherigos are, in essence, multicaches with a virtual element. You can think of it as a video game in the real world, where YOU are the main character.

Loading a Cartridge

In order to play a wherigo cache, first, you need to download the *cartridge* from wherigo.com. There will always be a link to the cartridge page on the geocaching.com cache page, as this is a requirement. Pay attention to the type of player you will be using - either Garmin Oregon/Dakota, PocketPC Device (Smartphone), Garmin Nuvi, or Garmin Colorado.

To transfer the wherigo to your device, connect it to the computer, and place the cartridge file in the appropriate wherigo folder. Then, you're ready to go!

Starting a Wherigo

In order to begin a wherigo, simply load the cartridge and hit PLAY. You might get an introductory message, but not necessarily. In any case, you will be brought to the MAIN SCREEN. This is your base of operations for a wherigo cache, and you'll be returning to this screen often.

The Main Screen

Locations

From the main screen, you can see what locations you are able to navigate to. Which **zones** are shown at any given time will change, depending on your progress. In order to travel from place to place, you will need to select this option from the main screen.

You See

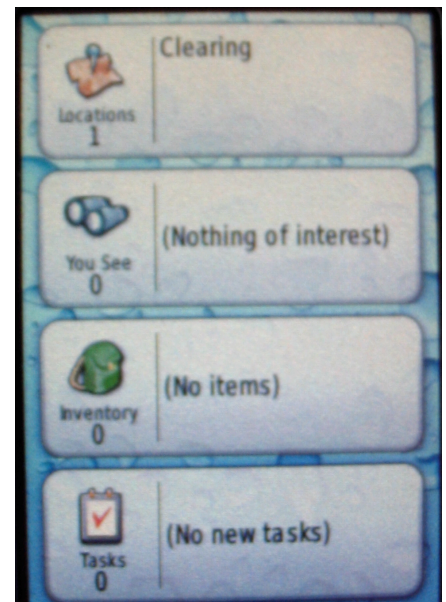
When you are within the boundaries of a zone, you might "see" some things within that zone. You might encounter virtual people, or items that you can interact with. **Always** pay attention to this category each time you return to the main screen, as most of your actions within a zone will take place from this category.

Inventory

As part of the wherigo, you might find virtual items. Sometimes, you will be able to take these with you, virtually speaking. If you take an item with you, you'll be able to interact with it anywhere you go, rather than having to return to the zone you found it in originally to "use it." Note that not all items can be placed in your inventory.

Tasks

All wherigos have tasks to accomplish, but not all will use this category. More complicated caches will give you a list of tasks as you learn about them, which make it easier to remember everything. The only purpose of this section is to remind yourself of what to do.



Playing the Wherigo

An ideal wherigo will give you good directions on where to go, and when. Some things to keep in mind while playing:

- The zones are NOT singular points, like a waypoint is. They are usually large rectangles, at least 20 meters wide and long. When you enter a zone, you should always take a few extra steps into the zone to make sure you're really inside it.
- Always interact with everything, checking every option that you can. Characters might give you hints that you'll need later on, and other times, they will reveal new zones for you to find. Items might be needed to (for example) unlock a (virtual) door in a future zone, and proceed.
- You might be required to find things in the real world, too. Wherigos can request the player to enter input. This can be the answer to puzzles, or some clue that will allow you to proceed.
- Some wherigos will use timers, forcing you to move quickly.
- Some wherigos save your progress as you go, others do not. It's a good idea to save your game on occasion regardless. On the Garmin devices, this requires you to quit the wherigo player (it will prompt you to save). Note that some Garmin devices will crash when playing a wherigo for no particular reason without warning - so, saving often will prevent the necessity of starting from scratch.
- Always pay attention to what you read, as you might not be able to get the text a second time!
- At the end of the wherigo, one of two things will happen:
 - You will be given coordinates for the cache itself.
 - or
 - You will be told where the cache is within one of the zones of the cartridge.Either way, you still need to find the cache, and sign the logbook!
- When you are done the wherigo, you might be given a completion code, or you might not. In either case, some cache owners would appreciate you uploading your completed save file to the wherigo.com website, as it will help with fixing any errors in the file. The cache owner would state this request on their cache page, and can help you figure out how to honour that request.